

# DUMFRIES HOUSE

A UNIQUE VENUE FOR WEDDINGS  
& SPECIAL OCCASIONS

Dumfries House has been described as a national treasure that epitomises what we imagine an 18th century classical stately home to be

# DUMFRIES HOUSE



Commissioned by the 5th Earl of Dumfries House, the House was designed and built by Robert and John Adam and was handed over to its new owner in 1759. On completion, the Earl of Dumfries embarked on a frantic shopping spree to ensure that his home was furnished in the most fashionable and comfortable way possible; no expense was spared. Furnishings for the principal apartments were ordered from the workshop of the renowned Thomas Chippendale in London and from three cabinet makers in Edinburgh. Most of these pieces remain in Dumfries House today, many in their original setting, making the collection a world leader in terms of 18th century furniture.

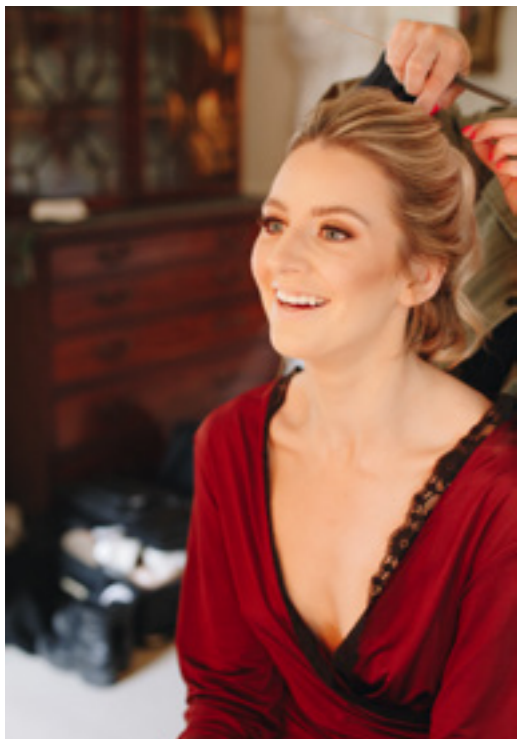
In 2007, HRH The Prince of Wales was made aware of the imminent sale of the House and its contents and made the decision to intervene to save this significant piece of heritage for

the nation. A charity, The Great Steward of Scotland's Dumfries House Trust, was formed to oversee and manage the House and its 2,000 acres of estate. In 2018, The Prince's Foundation was created through the merger of The Dumfries House Trust with three of the Prince's other charities. HRH The Prince of Wales is President of The Prince's Foundation, a major charity employing almost 300 people working across the UK and overseas. Dumfries House is the charity's Headquarters and is the home for many of its initiatives.

Throughout the last decade, the charity has undertaken an extensive and ambitious programme of conservation, restoration and development. This has returned the House and its collection to its former glory. An even greater amount of development work has been undertaken on the estate through the creation of magnificent gardens, woodland walks and many other facilities.

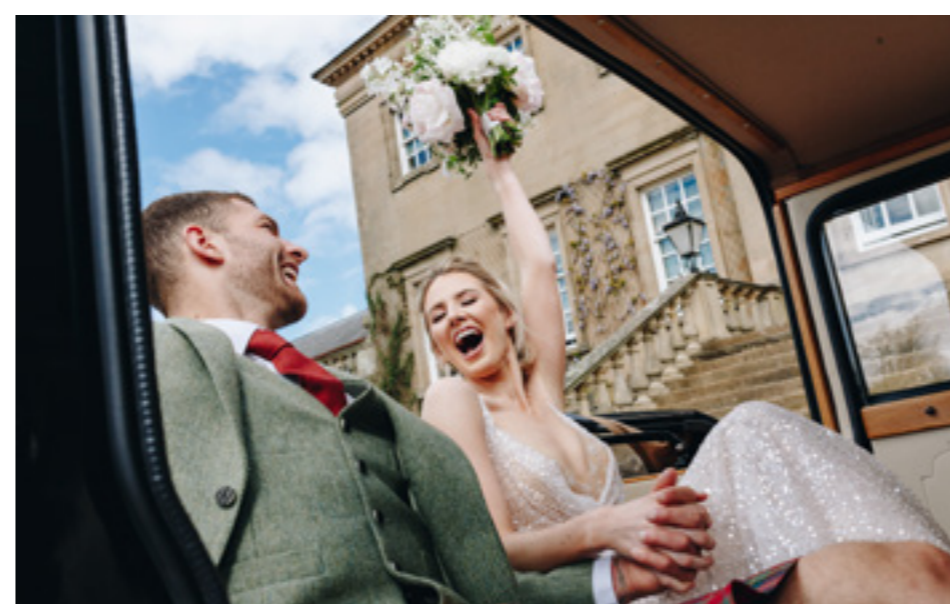
Photograph by Colin Hyslop





Your wedding marks a significant moment in your life and, as such, we understand that it not only has to be perfect in every detail, but it also has to be unique and tailored to your very specific needs

# YOUR SPECIAL OCCASION



It is for this reason that, whilst we have the experience to provide you with guidelines as to what might work well, we do not present our couples and their families with a template for their event.

From your first visit to Dumfries House, initial consultation and tour of the House, your Wedding Coordinator will be a constant presence from these first moments through to the final hours of your happy event. This is important and ensures that you feel totally confident and relaxed on your big day as, by this time, you will have established a strong relationship with each other. Your coordinator will know every detail of your plan and will only ever be a few feet away from you at each significant moment of your special day. We have an

extraordinary and very experienced Wedding and Hospitality Team who are well used to delivering high-end events in a discreet, highly efficient and courteous manner.

Dumfries House as a wedding venue is astonishingly versatile: be it a small intimate and discrete gathering or a full scale grand wedding, we have the accommodation and the resources to deliver a whole range of wedding styles. The one constant is the classical elegance that Dumfries House provides as a backdrop to your wedding day. From the initial approach to the classical façade and entrance to the House, to each of its elegant apartments, it cannot fail to create the atmosphere and memories that will remain with you, your family and your guests for a lifetime.

The ideal location for your wedding ceremony

## THE TAPESTRY ROOM

So called since it houses four exquisite Flemish tapestries, each on a different classical- mythical theme, this American walnut-panelled room exudes elegance and warmth. Situated on the principal floor, the Tapestry Room sits within the west wing of the main, central part of the House, and is accessed through the painstakingly restored and glorious Pewter Corridor. A Steinway baby grand piano is housed here which may be used for your ceremony. This is one of the largest rooms in the House, unlike any other.



Impress your guests with a reception in our

## ENTRANCE HALL

The main Entrance Hall sitting at the top of the front steps is the central point of the entire House, the whole idea of the original design being to impress the visitor. We are immediately presented with the Earl of Dumfries's credentials; the repeated presentation of his family emblem, a baby dragon or wyvern, and the Noble Order of the Thistle. All of the important rooms on the principal floor are entered from the Entrance Hall.



# BEAUTIFUL LOCATIONS FOR PHOTO OPPORTUNITIES



## THE WALLED GARDEN

The magnificently restored Queen Elizabeth II Walled Garden is sometimes referred to as the Estate's "jewel in the crown". The five-acre garden is one of the biggest in Scotland and features a mixture of terraces, display greenhouses and a unique 12-metre drop from north to south. At its centre is the 350-year-old sycamore, which pre-dates the garden and is now thriving thanks to expert arborist care.

## THE YELLOW DRAWING ROOM

Sometimes referred to as the Family Parlour or the North Drawing Room, this room would have formed part of a three-roomed apartment within the House (parlour, study, bedroom) for the Earl of Dumfries. The clue is in the name, as they say, and there is no mistaking where the name originates from once you enter. The exhilarating yellow damask on the restored Chippendale elbow chairs, Alexander Peter sofa and drapes from Chippendale pelmets lift this north facing room to new heights. This drawing room also houses a fully restored Kirkwood Harpsichord, one of the last pieces in the collection to be restored.



## AROUND THE ESTATE

There are numerous locations around the Estate to pause, reflect and to mark your special occasion.



## DINING & DANCING IN THE PAVILION



This is a grand space, ideal for larger scale events and appended to the rear of the east wing of the House. With its glass frontage, the Pavilion presents unparalleled views across open countryside across the north of the estate. Access to the Pavilion is through the ground floor of the House. It is a fantastically adaptable space and can be configured to suit the needs of any event. The walls of the Pavilion are bedecked with gilded mirrors and adorned with elegant ornamentation. It has its own permanent bar area.

# ELEGANT AND INTIMATE DINING ROOMS



## THE GREAT STEWARD'S DINING ROOM

Aptly renamed using one of His Royal Highness's Scottish titles, The Great Steward of Scotland, this room is the perfect setting for a more formal event or fine dining experience. It has over recent years established itself as the main, formal dining room of the House. Sitting on the principal floor at the extreme east end of the House, it is similar in size to the Tapestry Room but quite different in atmosphere. With walls lined in a deep red fabric and adorned with portraiture and pieces from the collection, it is memorable in every way without being intimidating.

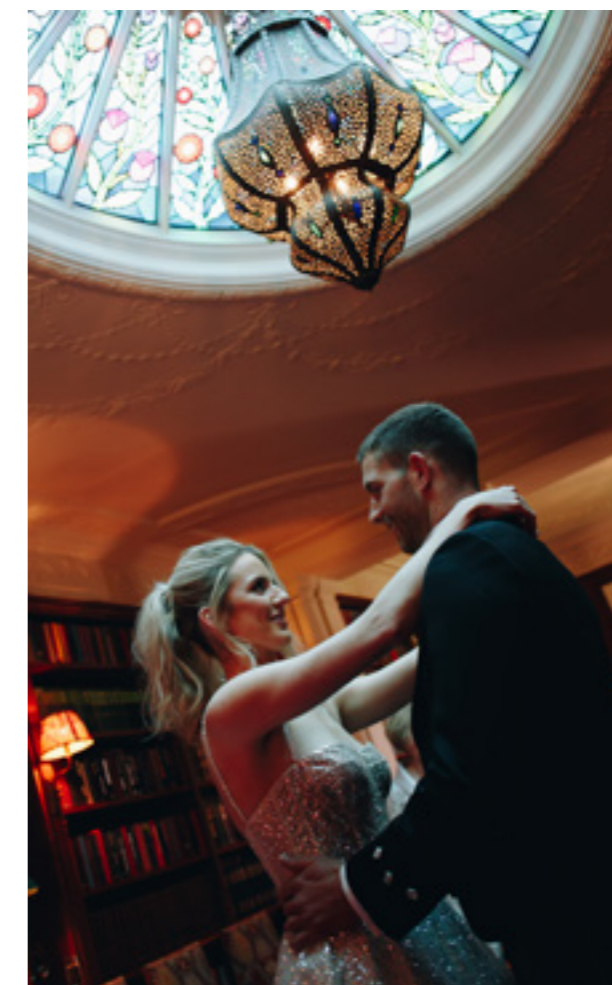
## THE PINK DINING ROOM

This intimate and formal dining room is extraordinarily special and could perhaps be described as the jewel in the crown. Sitting just off the front entrance and main entrance hall of the House, guests can experience the full impact of Georgian elegance. The room still holds most of the pieces specifically bought for this space by the Earl of Dumfries, much of it Scottish, and is complimented by decorative pieces by Thomas Chippendale. The plaster work alone, all designed by Robert Adam, is a rare and glorious sight to behold. The room is at its very best in the evening with a glowing fire and candle-lit candelabra.



## THE LIBRARY

This room, situated on the ground floor of the west wing, is a bit of hidden gem as it is not included the public tour of the House. A room lined with books and richly furnished, it is an incredibly welcoming space. Originally designed to be a Turkish bath, the signs of that intention are still there for those with a keen eye.



## AROUND THE DUMFRIES HOUSE ESTATE

## THE WALLED GARDEN PAVILION

This charming building looks as if it has been in place since the beginning of time: in fact it is relatively recent addition to the inside of the Dumfries House's breath-taking and extensive Walled Garden. Finished to the highest standard using many different traditional craft skills and furnished with hand-made limed oak tables and chairs, the Garden Pavilion sits adjacent to the Belvedere which enjoys magnificent views over the entire Walled Garden.



Our chefs and front-of-house staff are well versed in delivering high profile events on a daily basis

## OUR FOOD

The food we use, prepare and present is key to our success. We have our own highly experienced full-time staff who deliver an astonishing array of culinary wonders. There is a huge emphasis on using locally sourced produce wherever possible and a focus on using food that is seasonal. Of course, we have the luxury of having our own, large vegetable garden on site and much of the produce comes direct from there. From kitchen to table, we only aim for the highest of standards.



Our luxury guest accomodation

## THE LODGE

Our luxury, bespoke guest accommodation sits adjacent to one of the main entrances to the estate, some 500m from Dumfries House itself. Originally shown in the Adam plans as the Factor's House, together with a series of farm buildings, a careful restoration and development programme has created a unique quadrangle of 26 en-suite, double guest bedrooms. Each room has been carefully and individually designed to echo features of Dumfries House itself. Whilst each guest room has comfortable seating included, the Lodge also has two charming, country sitting rooms and a breakfast room. The Lodge is fully licensed and offers a drinks room service.





Our chefs and front-of-house staff are well versed in delivering high profile events on a daily basis

## OTHER ESSENTIAL ASPECTS OF YOUR EVENT

Our experienced guides will make this an informative and enjoyable part of your event. A tour of the House would normally last anything from 45 minutes to an hour. Tours of the estate are normally undertaken by coach and would take somewhere in the region of 1.5 hours. These can be scheduled into your planned event when best suits.

Dumfries House has good road and rail links to the South, with Glasgow only 1 hour's drive away, offering domestic and international air routes. The House has ample car parking facilities for guests on arrival.

To assist in making your event a real success, the Dumfries House Events Team would be delighted to support your staff in the following areas, and more: accommodation booking ; airport and rail transfers; itinerary setting; floristry, photography and musical entertainment; and private tours of Dumfries House and Gardens.



## OUR TEAM

Employing some 300 staff in the UK and overseas, more than two-thirds of all members of staff employed by The Prince's Foundation are based at Dumfries House. Staff work within a range of different departments, including: events and hospitality, catering, gardens and grounds, housekeeping, visitor services and guides, farming, education, outdoor activities, finance, shop assistants, café, and lodge. Combined, our Catering and Events & Hospitality team is the largest department within the organisation. This is a highly skilled department accustomed to delivering high-end events throughout the year. Our staff greet all guests and visitors to the House and Estate in the same way; with respect and great courtesy.







Dumfries House, Cumnock, Ayrshire KA18 2NJ • 01290 425 959 • [dumfries-house.org.uk](http://dumfries-house.org.uk)

PHOTOGRAPHY  
Nacho Rivera  
([www.nacho-rivera.com](http://www.nacho-rivera.com))

MODELS  
Lucy Borrie  
Robbie McIntyre

HAIR  
Loredanna Howie and Cherry  
Cherry Hair by Loredana

STYLING  
Sharon McPherson and  
Lauren McKinnon

FLOWERS  
Myrtle & Bracken

WEDDING CAR  
Craig Bilham  
Executive Travel

WITH THANKS TO  
THE STAFF AND  
VOLUNTEERS AT  
DUMFRIES HOUSE  
AND THE PRINCE'S  
FOUNDATION

ADDITIONAL  
PHOTOGRAPHY  
John Paul Photography

MAKEUP  
Jacqui Harrow

GOWNS  
Opus Couture

GROOM STYLING  
Kinloch Anderson

LINEN  
Jones Hire

PIPER  
Bryce McCulloch