

Make a simple hand sewn plant pot cover

This is also transferable to make a tub for storage e.g pens .

What you need:

- Fabric. We have used a Tea Towel. You want to use fabric that has a bit of weight to create structure in the tub.
- Hand sewing needle
- Thread (I used machine thread doubled)
- Scissors

Cut Out: **One outer and One lining.**

I have cut this on the fold. If you cut out 4 separate rectangles, remember to add an extra for seam allowance.

The main stitched used is backstitch:

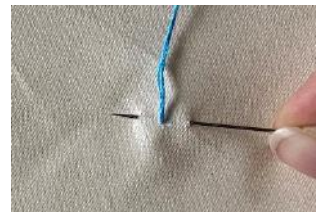


1. Bring your thread up from underneath.



2. Take your needle back the way.

The length of the stitch is determined by the gap you leave.



3. You now want to jump forward leaving the gap of the stitch for you to go back



4. Now go back and fill in the gap. You want to put your stitch down at the exact point of the last stitch.

5. Repeat to create a continuous line of stitching



Front of back stitch



Reverse (back side) of back stitch



To work out the sizes:

This template size is for a 10cm plant tub. If you wish to create one for a bigger tub, please use the notes below.

Size for 10cm= 18.5cm x 17cm rectangle

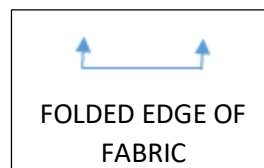
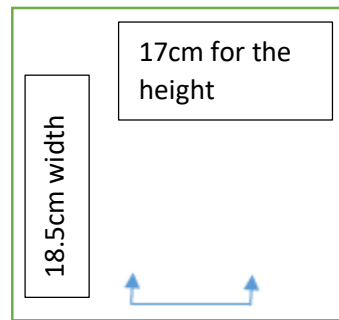
Notes for other sizes: Measure the circumference the top of the tub. Add on 1cm for ease and 4cm for seam allowance. Eg. 32cm+1cm+4cm= 37cm

$\frac{1}{2}$ this to create your pattern width. $37/2=18.5$

Measure the height of your pot and add on 7cm for the turn down and seam allowance. Eg pot measures 10cm + 7 = 17.

Therefore, my rectangle will be 18.5cmx17cm

Step 1: Make a pattern on paper and cut out the pieces in fabric.



Step 2: Place right sides together and if you have any pins- pin down the 2 sides. Thread up your hand sewing needle. I would double your thread to make sure that the strength is really strong.

The right side of the fabric is the side you want to see on the outside of your product. The fabric I have used which is printed has a patterned printed side and then a diffused white side. The printed pattern is the right side.

Backstitch down the 2 sides using a 1cm seam allowance from the edge of the fabric.



Step 3: We are going to create a box corner. To do this we want to pull the bag open slightly which will allow you to flatten the bottom corner into a triangle, like the image below. (1)



(1)



(2)



(3)

Where my thumb is – is the indicator of roughly where we want to stitch. Roughly 5 cms up from the corner. (2)

You are now going to back stitch along to create a triangle flap. (3)

Repeat on the both corners.

You are now going to repeat these steps again to create 2 of the same. One will be the lining and one is the outer. You could use a contrasting fabric if you wish.

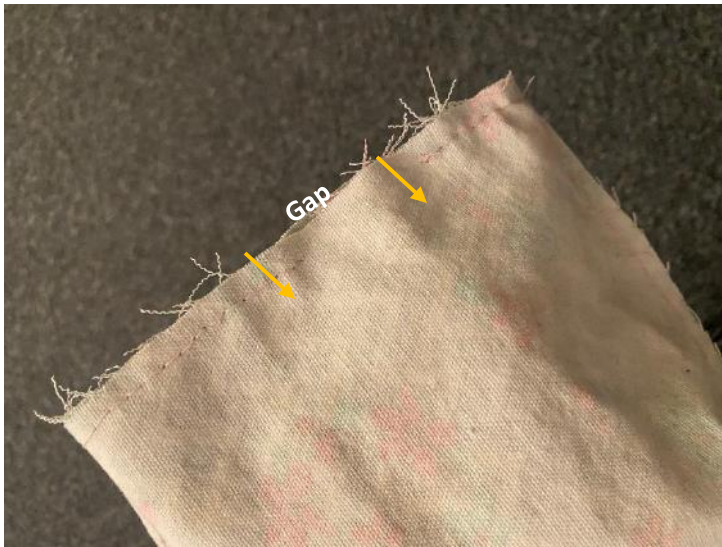
Once you have 2 shells we are going to join them together. Right side together so at this moment only turn one the correct way around.



Right sides together in the inside

One bag is turned the correct way and the other is inside out.

To join them together we are going to do a back stitch all the way around leaving a small gap. This gap is going to allow us to bag out the product. The gap needs to be big enough to pull the fabric through.



You are now going to pull the bag through the gap you left to reveal the right side of your fabric. Once you have pulled all of the fabric through you push one side inside the other to create the bucket shape.

The final stage is to close up the gap.

To do this you can either use a running stitch (beginners) or slip stitch (intermediate). If you do a running stitch we recommended your stitch all the way around and stitch as close to the edge to catch in the seam.



Running stitch



Bring your thread up from underneath and bring the needle down to create your first stitch.



Leave a gap the repeat the 1st step.

Continue this keeping your stitch length and gap as similar as possible.

Slip Stitch



Stitch in the inside catching the seam and work across from one side to the other in a pattern like the drawings above.